

H E N R Y A N A R U A G U

R . E n g . C O R E N . M N S E . M A S H R A E . M P M I . N E T W O R K

PROJECT PORTFOLIO

KASI CLOUD DATACENTERS

Datacenters Development | 2022

Lekki Campus, Lekki, Lagos State

60MW Datacenter (Enterprise and Hyperscalers), Tier IV, 99.999 Availability, 2N+1 Infrastructure, 4Nos. 4 Floors Datacenter Development.

Other Projects: Eket Campus, Eket, Akwa-Ibom State | Cabling Landing Station, Akwa-Ibom State | Foundry, Lagos, Lagos State



Design Partners

Architect: ACCL Ltd | Structural Engineer: Pearl Armour Ltd
Design Managers: Future Tech Ltd | Power Partners: DVM Power
HVAC Partners: CMS Ltd | Fibre Infrastructure: Otison Ltd
Govt Agencies: LASMIRA, TCN, MoW, NCC.

Design Scope

Power Infrastructure: Dedicated 132kV/33kV Power from TCN, Jakande to Lekki Campus | Power Distribution at 33kV along Campus.

Network Infrastructure: Fibre RoW from Lekki-Epe Expressway to Lekki Campus | Fibre Manhole, Vaults, Conduit Count in Campus.

HVAC Infrastructure: Services (Chilled Water Design, VRF design, Closed Couple Air Conditioning design, fresh air supply design, central toilet extract, kitchen extract etc.)

Plumbing Services: Cold & Hot Water Supply Services | Drainage Services (Sewage treatment plant design) | Rainwater drainage services | Fire Fighting Services (Combined Wet Risers system - Sprinkler Design & landing Valves) | Fire Suppression (Novec 1230 Fire Suppression design).

+2347062060938

Henry.anaruagu@hotmail.com

Linkedin.com/in/HenryAnaruagu

15B Enahoro Crescent, Atlantic
View Estate, Lekki, Lagos

EXPERTISE

Autodesk REVIT MEP

AutoCAD MEP

Microsoft Word/Excel/PowerPoint

Microsoft Project

Bentley Hevacomp

Trane Trace

Simple Hydraulic Calculator

Pipe Flow Expert

Prezi

HENRY ANARUAGU

R.Eng. COREN. MNSE. MASHRAE. MPMI. NETWORK

PROJECT PORTFOLIO

-  +2347062060938
-  Henry.anaruagu@hotmail.com
-  [Linkedin.com/in/HenryAnaruagu](https://www.linkedin.com/in/HenryAnaruagu)
-  15B Enahoro Crescent, Atlantic View Estate, Lekki, Lagos
- NATIONAL CONTENT DEVELOPMENT AND MONITORING BOARD (NCDMB), BAYELSA**
- Office Development | 2015**
- 18 Floors Office Development, 4 Floors Car Parking Development, 2 Floors Conference Building, 1 Services building.

EDUCATION

**ST. GREGORY'S COLLEGE,
IKOYI**
2003 – 2009

**FEDERAL UNIVERSITY OF
TECHNOLOGY, OWERRI**
B.Eng, Mechanical Engineering
2009 – 2014

UNIVERSITY OF LAGOS, AKOKA
Master of Project Management
2020 – 2022

SKILLS

Excuse Aversive

Result Oriented

Client Focused

Project Management

Attention to Detail

Excellent Communication

Business Management

Team Player

Willingness to Learn



Main Consultant & Contractor - Megastar Technical & Construction Company Ltd

Scope: Design and Supervise

Cold & Hot Water Supply Services (pressurized system with emergency gravity feed)

Drainage Services (Sewage treatment plant design) & Rainwater drainage services

Fire Fighting Services (Combined Wet Risers system - Sprinkler Design & landing Valves), Staircase pressurization design, Fire Suppression (Novec 1230 Fire Suppression design)

HVAC Services (Chilled Water Design, VRF design, Closed Couple Air Conditioning design, fresh air supply design, central toilet extract, kitchen extract etc.)

HENRY ANARUAGU

R.Eng. COREN. MNSE. MASHRAE. MPMI. NETWORK

PROJECT PORTFOLIO

+2347062060938

Henry.anaruagu@hotmail.com

in [Linkedin.com/in/HenryAnaruagu](https://www.linkedin.com/in/HenryAnaruagu)

15B Enahoro Crescent, Atlantic
View Estate, Lekki, Lagos

EXPERTISE

Autodesk REVIT MEP

AutoCAD MEP

Microsoft Word/Excel/PowerPoint

Microsoft Project

Bentley Hevacomp

Trane Trace

Simple Hydraulic Calculator

Pipe Flow Expert

Prezi

DANGOTE GROUP HEAD OFFICE, IKOYI, LAGOS STATE

Office Development | 2018

16 Floors development consisting of 8 Floors Office Development, 1 Ancillary floor,
2 Levels Auditorium, 4 Floors Car Parking, 1 services basement, Helipad



Architect: James Cubitt Architect Ltd

Structural Engineer: MOA Consulting Ltd

Main Contractor - Dangote

MEP Contractor - ITB

Scope: Design and Supervise

Cold & Hot Water Supply Services (pressurized system with emergency gravity feed)

Drainage Services (Sewage treatment plant design) & Rainwater drainage services

Fire Fighting Services (Combined Wet Risers system - Sprinkler Design & landing Valves), Staircase pressurization design, Fire Suppression (Novec 1230 Fire Suppression design)

HVAC Services (Chilled Water Design, VRF design, Closed Couple Air Conditioning design, fresh air supply design, central toilet extract, kitchen extract etc.)

HENRY ANARUAGU

R.Eng. COREN. MNSE. MASHRAE. MPMI. NETWORK

PROJECT PORTFOLIO

☎ +2347062060938

✉ Henry.anaruagu@hotmail.com

in LinkedIn.com/in/HenryAnaruagu

📍 15B Enahoro Crescent, Atlantic
View Estate, Lekki, Lagos

TRAININGS

2015 Project Management
Professional Course, HIIT, PLC

2016 Training of Fire Pro design
and installation

2017 Association of Consulting
Engineers in Nigeria (ACEN) AGM

2018 American Society of Heating,
Refrigeration and Air conditioning
Engineers (ASHRAE) Distinguished
Lecture.

2019 Launch of Cummins gas
generator in Nigeria

2019 launch of Wavin pipes in
Nigeria

DEPARTMENT OF PETROLEUM RESOURCES (DPR) HEAD OFFICE, ABUJA

Office Development | 2019

12 Floors development consisting of 6 Floors Office Development, 4 Ancillary floor, 3 Levels Auditorium, 6 Floors Car Parking, 1 services basement, Helipad.



Architect: Artec Practice Ltd

Structural Engineer: MOA Consulting Ltd

Scope: Design

Cold & Hot Water Supply Services (pressurized system with emergency gravity feed)

Drainage Services (Sewage treatment plant design) & Rainwater drainage services

Fire Fighting Services (Combined Wet Risers system - Sprinkler Design & landing Valves), Staircase pressurization design, Fire Suppression (Novec 1230 Fire Suppression design)

HVAC Services (Chilled Water Design, VRF design, Closed Couple Air Conditioning design, fresh air supply design, central toilet extract, kitchen extract, Attic Smoke extract, etc.)

HENRY ANARUAGU

R.Eng. COREN. MNSE. MASHRAE. MPMI. NETWORK

+2347062060938

Henry.anaruagu@hotmail.com

Linkedin.com/in/HenryAnaruagu

15B Enahoro Crescent, Atlantic
View Estate, Lekki, Lagos

TECHNICAL SKILLS

AutoDesk Software

AutoCAD

Autodesk Inventor Professional

Autodesk Revit

Microsoft Office

Desktop Publishing (Word, excel,
Power Point etc.),

Microsoft Project

Mechanical Software

Simple Hydraulic Calculator for Fire
Fighting Simulations

Hevacomp for HVAC simulations

Trane Trace for HVAC simulations

Pipe flow expert for Fluid flow
simulations

EPANET for central water
distribution

VRF Software for LG, Toshiba

PROJECT PORTFOLIO

CORONA SCHOOL JUNIOR BOYS HOSTEL, AGBARA, OGUN STATE

Hospitality Development | 2015

152 students Capacity on 4 Floors with House parent's apartment, Administrative area,
Dinning and severy.



Architect: Studio OLA

Structural Engineer: SOP Consulting Ltd

Main Contractor - Blueline Urban Project Ltd

MEP Contractor - Kenol Nigeria Ltd

Scope: Design and Supervise

Cold & Hot Water Supply Services (Gravity system, central water heating system,
pressurized system for topmost floor)

Drainage Services (Connection to central sewage system)

Fire Fighting Services (Hosereel, dry risers, Portable fire extinguisher)

HVAC Services (Split AC, toilet extract design)

HENRY ANARUAGU

R.Eng. COREN. MNSE. MASHRAE. MPMI. NETWORK

PROJECT PORTFOLIO

+2347062060938

Henry.anaruagu@hotmail.com

Linkedin.com/in/HenryAnaruagu

15B Enahoro Crescent, Atlantic
View Estate, Lekki, Lagos

MEMBERSHIP

Nigerian Society of Engineers
(NSE).

Council for the Regulation of
Engineers in Nigeria (COREN)

American Society of Heating,
Refrigerating and Air-conditioning
Engineers (ASHRAE)

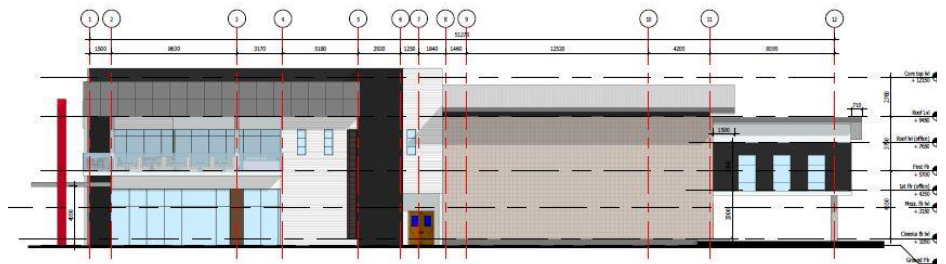
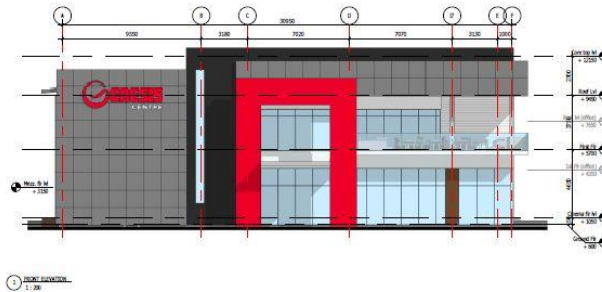
Project Management Institute
(PMI)

Volunteer, Federal road safety
Corps (FRSC)

GENESIS CINEMAS, OWERRI, IMO STATE

Hospitality Development | 2019

5 Floor development consisting of 4 Cinema Halls on 2 Floors, 1 floor Restaurant,
1 floor food preparation and eating area, 1 floor kids play area.



Architect: Harcourt Adukah & Associates

Scope: Design

Cold & Hot Water Supply Services (pressurized system with emergency gravity feed)

Drainage Services (Sewage treatment plant design),

Fire Fighting Services (Wet Risers system - Landing Valves, Hosereels, Fire
extinguishers, External Fire Hydrant)


Fire Suppression (Novec 1230 Fire Suppression design)


HVAC Services (VRF design, Dedicated outdoor air system design, fresh air supply
design, central toilet extract, kitchen extract, projector extract design, popcorn machine
extractor etc).


H E N R Y A N A R U A G U


R . E n g . C O R E N . M N S E . M A S H R A E . M P M I . N E T W O R K

PROJECT PORTFOLIO

 +2347062060938

 Henry.anaruagu@hotmail.com

 [Linkedin.com/in/HenryAnaruagu](https://www.linkedin.com/in/HenryAnaruagu)

 15B Enahoro Crescent, Atlantic View Estate, Lekki, Lagos

ACHIEVEMENTS

St. Gregory's College, Ikoyi
Social Prefect 2008

Federal University of Technology, Owerri
Brother's Coordinator, Nigerian Federation of Catholic Students
2012-2014

National Youth Service Corps (NYSC), Lagos
Cadet-In-Chief, Jibowu Unit, Federal Road Safety Corps 2015 - 2016.
State Award for NYSC Project done 2016.

Catholic Youth Organisation of Nigeria
Our Lady of Fatima Catholic Church, Aguda
Financial Secretary 2015 - 2018

SOME OTHER PROJECTS INVOLVED

AFREXIMBANK, ABUJA

Mixed Development | 2020

7 Floors Office Development, 7 Floors Hotel Development, 2 Level Basement Car Parking Development, 2 Floors Conference Building.

MTN REGIONAL OFFICE, PORTHARCOURT

Office Development | 2018

4 Floors Office Development consisting of open offices, conference room, kitchen, car park, gate house, sit out area.

ALIMA ATTA ONCOLOGY WARD, LAGOS STATE

Hospital Development | 2019

66 Bed oncology ward on 4 Floors with doctors office, nurse station, isolation wards, meeting rooms and children's play area.

EYIMBA ECONOMIC CITY, ABIA STATE

Estate Development | 2020

5000 capacity estate with residential, industrial, commercial sections.

SHELL HANGER, PORTHARCOURT

Aeronautic Development | 2016

1 Floor for Plane and Helipad Parking

RANONA (OLAMS) FACTORY, AMUO ODOFIN, LAGOS

Factory Development | 2017

JARO INDUSTRIES, MAKUN, OGUN STATE

Factory Development | 2018

PABOD BREWERIES, PORTHARCOURT

Factory Expansion | 2016